

MYERS SHEETMETAL

A DIVISION OF KAMPEL ENTERPRISES, INC.
www.myerssheetmetal.com

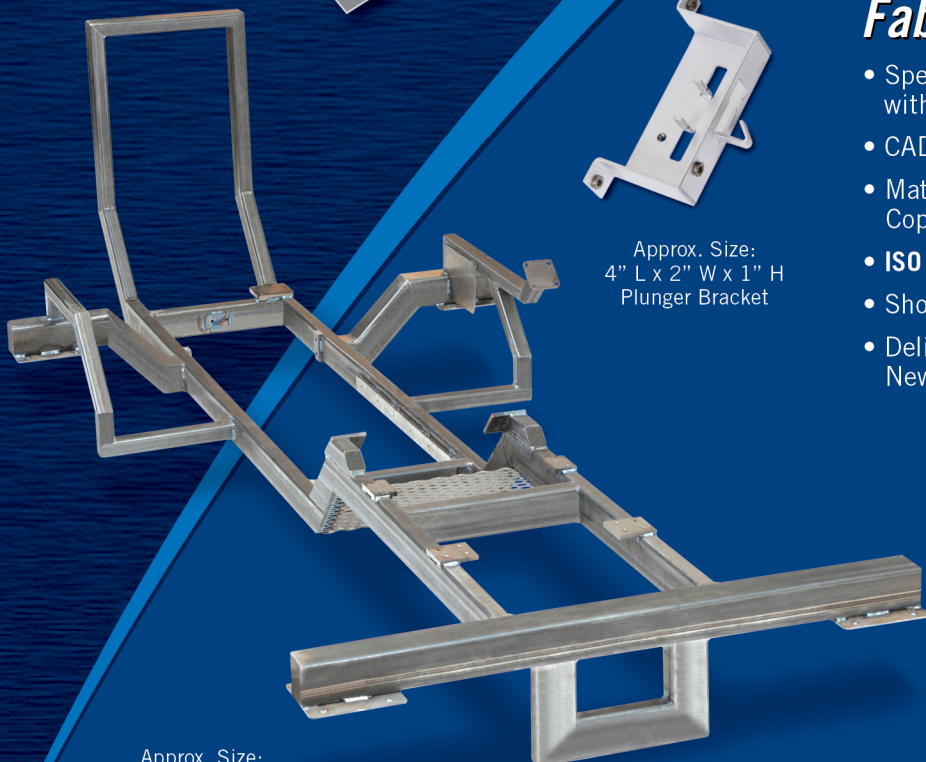


Precision Sheet Metal Fabrications and Assemblies

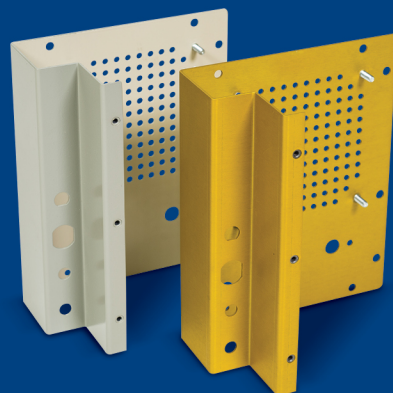
- Specializing in Prototypes and Production Quantities with cost cutting manufacturing methods in mind
- CAD/CAM file formats: DWG, IGES, DXF, PDF
- Materials: Carbon Steel, Stainless Steel, Aluminum, Copper and Alloys
- **ISO 9001 Certified**
- Short Lead Times Available with Qualified Projects
- Delivery to Pennsylvania, Maryland, Delaware and New Jersey via Company Owned Trucks



Approx. Size:
4" L x 2" W x 1" H
Plunger Bracket



Approx. Size:
72" L x 24" W x 24" H
Frame



Approx. Size:
6" L x 8" W x 3" H
Cover Assembly



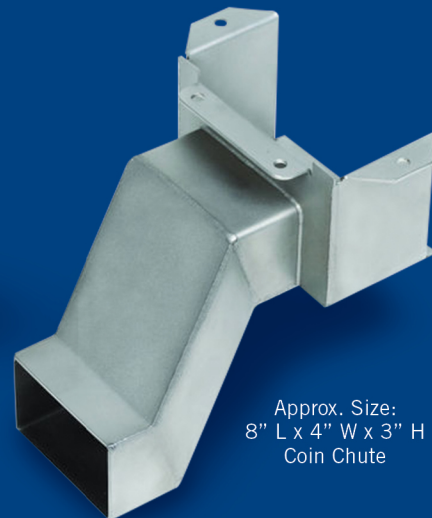
Approx. Size:
18" L x 11" W x 2" H
Buss Plate



Approx. Size:
20" L x 12" W x 4" H
Chassis Assembly



Approx. Size:
8" L x 5" W x 2" H
Heater Cover



Approx. Size:
8" L x 4" W x 3" H
Coin Chute

Superior Quality and Service

From the beginning of your sheet metal requirements to the finished parts being delivered to your dock, our ongoing goals are to provide you with uncompromised quality and service at a competitive price. Please call our Customer Service with your questions.

MYERS SHEETMETAL

A DIVISION OF KAMPEL ENTERPRISES, INC.
www.myerssheetmetal.com



ISO 9001
Registered

Quality
Management



Approx. Size:
3" L x 2" W x 1.5" H
Sensor Cover



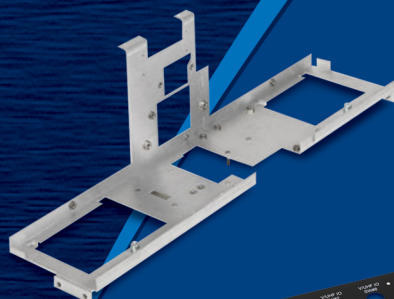
Approx. Size:
8" L x 6" W x 1" H
Rear Panel



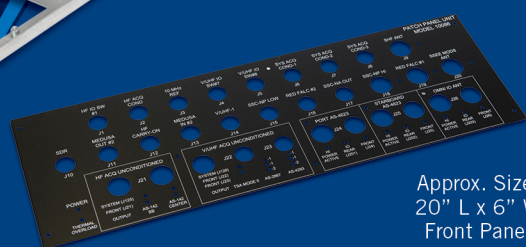
Approx. Size:
20" L x 6" W x 2" H
Ink Fountain



Approx. Size:
36" L x 12" W x 36" H
Storage Cabinet



Approx. Size:
14" L x 6" W x 6" H
Front Frame



Approx. Size:
20" L x 6" W
Front Panel



Approx. Size:
18" L x 14" W x 72" H
Atim Cabinet



We Specialize in Precision Sheet Metal Fabrications

Myers Sheetmetal specializes in the design and production of precision sheet metal fabricated parts and assemblies. Our manufacturing capabilities include, but are not limited to High Speed Turret Punching, LASER Cutting, LASER Flat Part Inspection, CNC Precision Bending and Forming, Certified TIG and MIG Welding, Brazing, CNC Machining, Finishing, Painting and Silk Screening. Please visit our website or call our Customer Service Department for a complete "Equipment/Capabilities List."

Our fully integrated Quality Program incorporates both **ISO 9001** and a full-time Quality Control Department. Our QC Program employs procedures and methods that record and document all of our manufacturing processes. Inspection traceability from first piece inspection to the completed part or assembly assures dimensional and finish requirements have been met.